



OFFICE OF THE VICE PRESIDENT
THE REPUBLIC OF INDONESIA

NATIONAL TEAM FOR THE ACCELERATION OF POVERTY REDUCTION (TNP2K)

Bambang Widianto
Deputy for Social Welfare and Poverty Alleviation/
Executive Secretary of National Team for the Acceleration of Poverty Reduction

JULY 2011

NATIONAL TEAM FOR THE ACCELERATION OF POVERTY REDUCTION (TNP2K)

- Presidential Regulation No.15/2010 on the Acceleration of Poverty Reduction.
- The presidential regulation is to support the SBY-Boediono Vision-Mission on reducing poverty level to 8-10% by the end of the year 2014.

TASKS OF THE NATIONAL TEAM

- a. Design, plan and budgeting for poverty reduction policies and programs;
- b. Synergize, synchronize, harmonize, and integration of poverty reduction policies and programs;
- c. Supervise and control the implementation of the poverty reduction programs and activities.

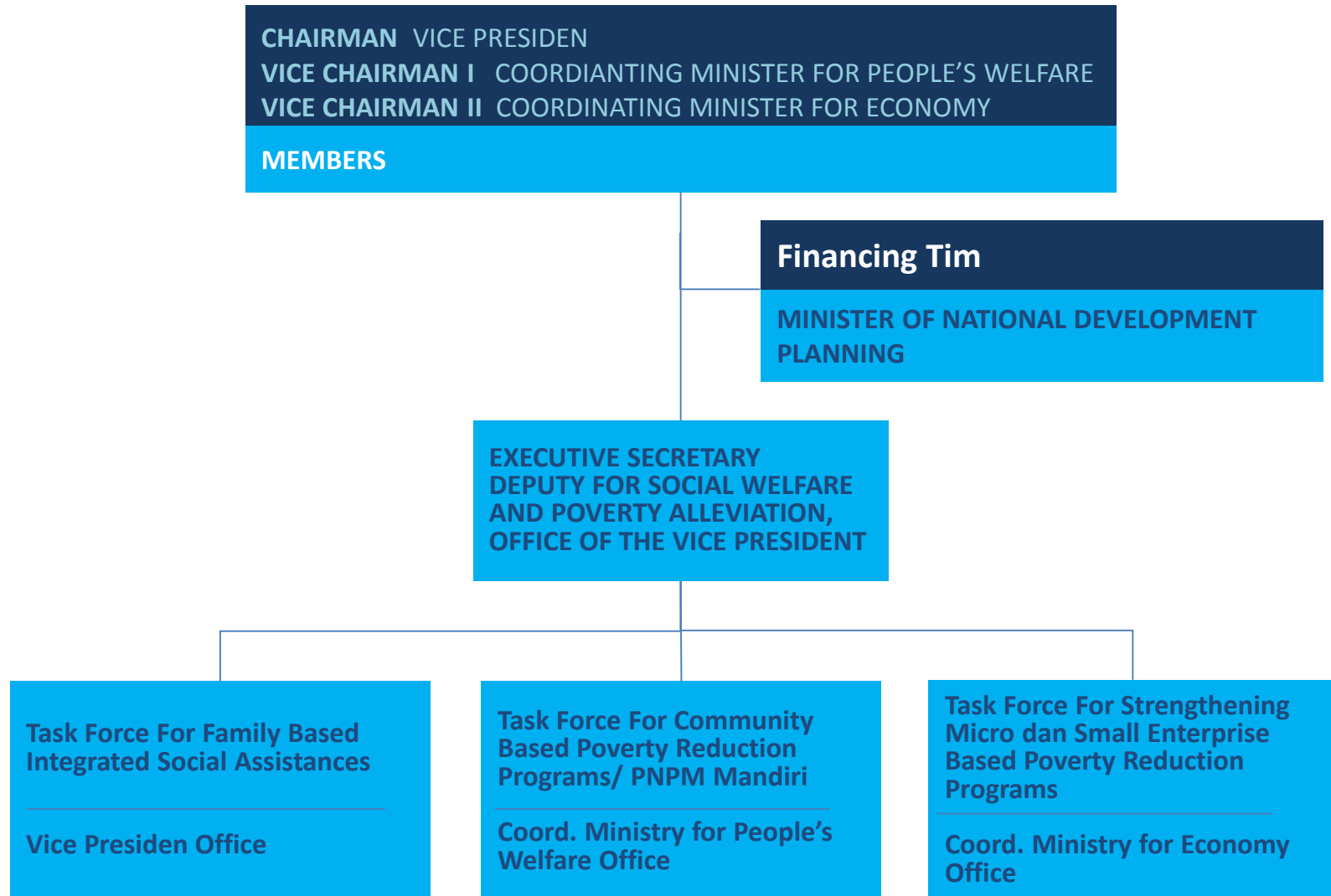
MEMBERS OF THE NATIONAL TEAM

- Chairman : Vice President
- Vice Chairman I : Coordinating Minister for People's Welfare
- Vice Chairman II : Coordinating Minister for Economy
- Executive Secretary : Deputy for Social Welfare and Poverty Alleviation, Office of the Vice President

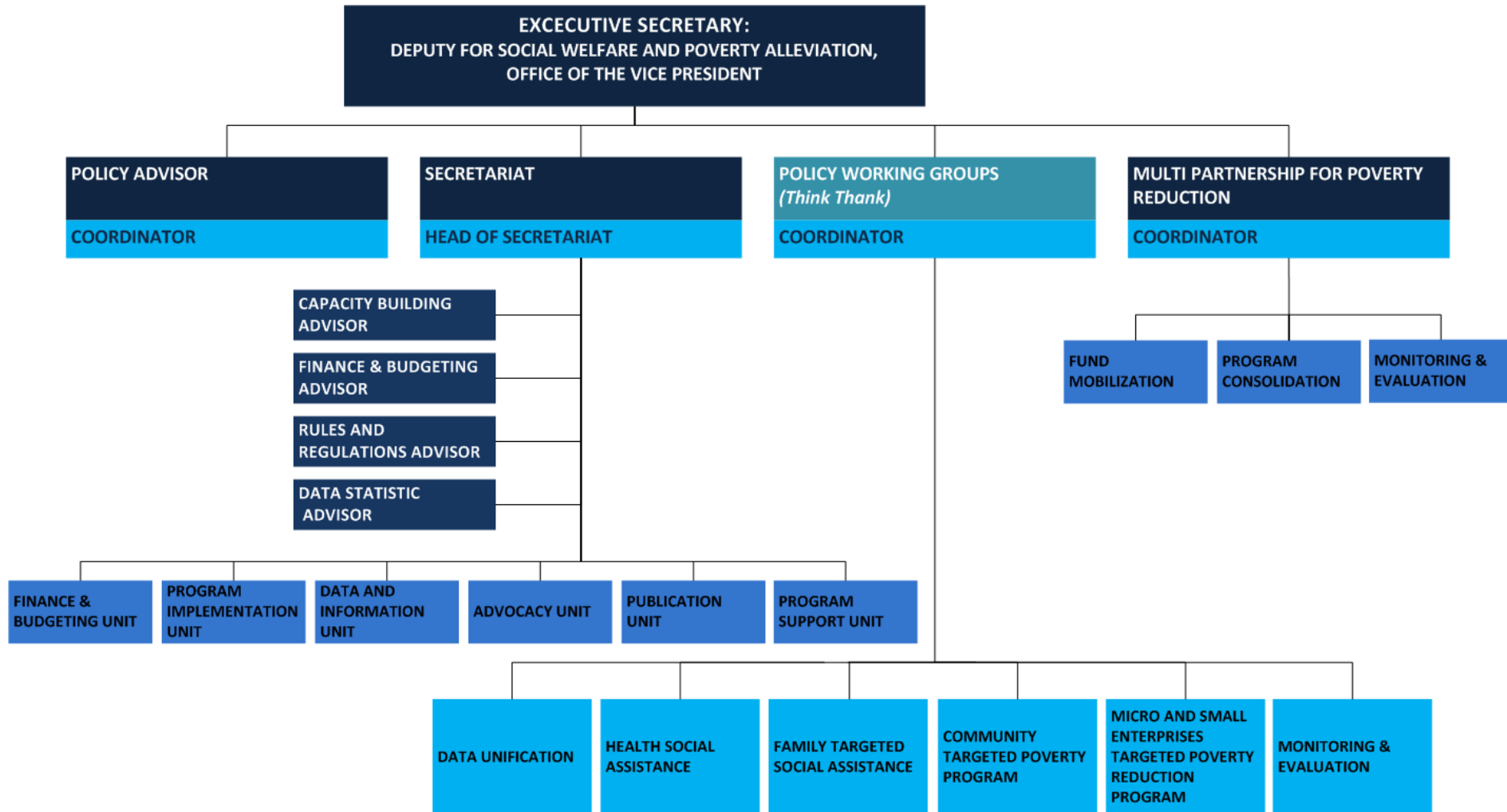
MEMBERS OF THE NATIONAL TEAM

1. Minister of Home Affairs
2. Minister of Finance
3. Minister of Social Affairs
4. Minister of Health
5. Minister of National Education
6. Minister of Public Works
7. Minister of Small and Medium Enterprises
8. Minister of Disadvantage Areas Development
9. Minister of National Development Planning
10. Chairman of the Developmental Supervision and Control of the President Working Unit
11. Cabinet Secretary
12. Head of Central Statistics Bureau
13. Communities, enterprises, and stakeholders determined by the Chairman

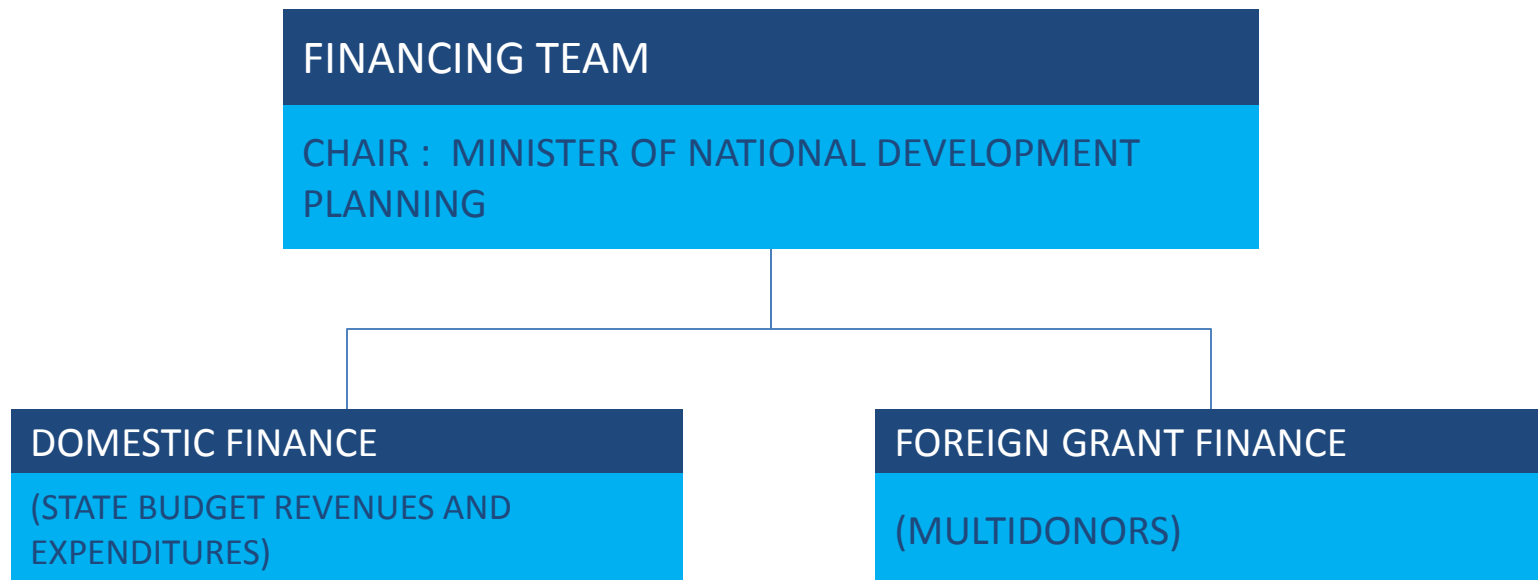
ORGANIZATION STRUCTURE OF THE NATIONAL TEAM



SECRETARIAT OF THE NATIONAL TEAM



FINANCING TEAM OF THE NATIONAL TEAM



POVERTY RATE



● Poverty Rate

■ RPJM Target (Optimistic Scenario)

▲ RPJM Target (Moderate Scenario)



POVERTY REDUCTION ACCELERATION

Period of March 2009 – March 2010:

14.7 million people are out the poverty line, 3.2 million people live below the poverty line again, net 1.5 million people are out of poverty.

I. IMPROVING SOCIAL PROTECTION PROGRAM

- Family-based Social Assistance
- Health Assistance for the Poor Families
- Educational Assistance for the Poor People

II. IMPROVING HOUSEHOLDS ACCESS TO BASIC SERVICE: EDUCATION, HEALTH, CLEAN WATER , SANITATION, AND HOUSING

III. COMMUNITY EMPOWERMENT

- Improving the implementation of PNPM Mandiri

IV. ENABLING ENVIRONMENT: QUALITY & INCLUSIVE ECONOMIC GROWTH

- Small and Medium Enterprises and Assistance to Micro Enterprises
- Labor intensive industry
- Economic Connectivity
 - Infrastructure
- Business Climate
 - Flexible Labor Market
 - Infrastructure
- Rural Development
- Agricultural Development

THREE CLUSTERS OF POVERTY ALLEVIATION PROGRAM IN INDONESIA

CLUSTER 1: POVERTY REDUCTION PROGRAM TARGETED TO HOUSEHOLD (FAMILY CENTERED INTEGRATED SOCIAL ASSISTANCE)

CLUSTER 2: POVERTY REDUCTION PROGRAM TARGETED TO COMMUNITY (COMMUNITY BASED POVERTY REDUCTION PROGRAM - PNPM)

CLUSTER 3: POVERTY REDUCTION PROGRAM TARGETED TO MICRO AND SMALL SIZED ENTERPRISES

SHORT-MEDIUM TERM **PRIORITIES**

1. The unification of national targeting system
2. Improving the implementation of social health aid for the poor people
3. Improving the implementation and broadened the scope of Conditional Cash Transfer (*Program Keluarga Harapan*)
4. The integration of other community empowerment program into PNPM Mandiri

Monitored Through Inpres No.1 Year 2010 On The Acceleration Of National Development Priorities Acceleration Year 2010 And Inpres No. 3 Year 2010 On Fair Development Program

ENABLING ENVIRONMENT: QUALITY & INCLUSIVE ECONOMIC GROWTH

- Formulating National Strategy of Financial Inclusion to Foster Economic Growth and Poverty Reduction
- Empowering the Regional Coordination Team for Poverty Reduction
- Supervising and Monitoring the Disbursement of Pro-poor Programs and Activities
- Developing Private-Public Partnership for Poverty Reduction
- Supervising Cash for Work for Disaster Relief
- Improving Indonesian Village Potential Survey
- Mapping and Targeting for Cluster 4 Programs
- Supporting coordination of Cluster 4

THANK YOU

